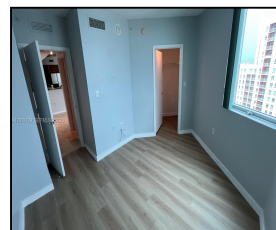


9055 SW 73rd Ct #2007

\$449,000



## Remarks

Discover perfect combination of comfort and convenience in spacious 2B/2B boasting 1,150sf of liv. space in the heart of Kendall. Located directly across Dadeland Mall, offers easy access to shopping/dining, and entertainment options. Features include: bright/open layout with ample natural light, 1 assigned parking space + complimentary valet parking for guests. Functional kitchen, plenty of storage, large bedrooms, including a master suite with pvt. bath, washer/dryer conveniently located inside. This condo offers unbeatable access to major highways (US-1, Palmetto Expressway), public transportation and the Metrorail station. making it a commuter's dream. whether you're looking for a home in a

## Features & Amenities

<b>County</b>		<b>Bedrooms</b>	2	<b>MLS#</b>	A12017429
<b>Address</b>	9055 SW 73rd Ct	<b>Bathrooms</b>	2	<b>Status</b>	A
	#2007	<b>Haft Bathrooms</b>	0	<b>Tax Amount</b>	\$5831
<b>City</b>	Miami FL	<b>Garage Spaces</b>	2	<b>Tax Year</b>	\$2,024
<b>Zip</b>	33156	<b>Water Front</b>	n/a	<b>Year Built</b>	2006
<b>Subdivision</b>	METROPOLIS I AT	<b>Pool</b>	n/a		
	DADELAND	<b>Pets Allowed</b>	n/a		
<b>Unit #</b>	2007	<b>Total Area SqFt</b>			
<b>Complex</b>	Metropolis I	<b>Maintenance Fee</b>	\$1,200		
		<b>Lot Dimensions</b>	1,150		

Information has not been verified, is not guaranteed