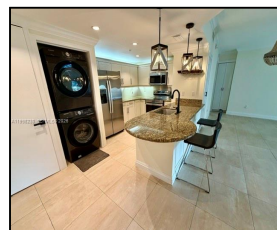
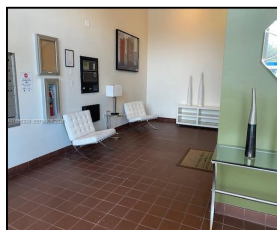


7270 SW 88th St #B306

\$3,950



Remarks

Spacious and fabulous 3-bedroom condo is now available in Downtown Dadeland. Light neutral tile throughout, corner location with two balconies, near elevator and with a parking spot also, near elevator for easy access. Many upgrades include extra built out closet space in all rooms and pantry. Motorized window treatments. Recent stainless steel kitchen appliances, large eat at counter open to living/dining. Great for entertaining. Split bedroom plan, primary bedroom with large shower and two closets. Pool and gym in community. Dadeland is a vibrant and popular area, enjoy restaurants, shops and all it has to offer. Located close to Metro Rail and major roadways. Extra parking space can possibly be

Features & Amenities

County		Bedrooms	3	MLS#	A11998230
Address	7270 SW 88th St #B306	Bathrooms	2	Status	A
City	Miami FL	Half Bathrooms	0	Tax Amount	\$
Zip	33156	Garage Spaces	1	Tax Year	\$0
Subdivision	DOWNTOWN DADELAND CONDO N,Downtown Dadeland	Water Front	n/a	Year Built	2006
Unit #	B306	Pool	n/a		
Complex	DOWNTOWN DADELAND CONDO N	Pets Allowed	n/a		
		Total Area SqFt			
		Maintenance Fee	\$0		
		Lot Dimensions	1,535		

Information has not been verified, is not guaranteed