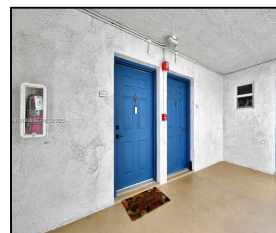
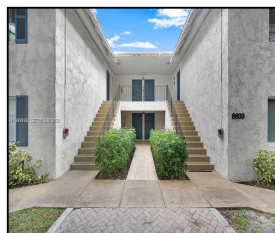
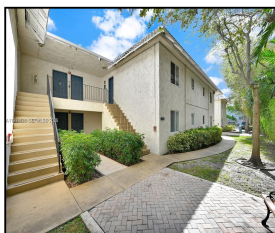
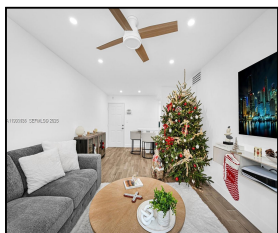


8609 SW 68th Ct #24

\$2,550



## Remarks

Beautifully updated 2 bedroom 1 bathroom condo in the sought-after neighborhood of Pinecrest. This well-maintained condo offers a modern kitchen, refreshed bath, and bright open living space. Ideally located near S. Miami's popular restaurants, shops, Dadeland mall, and across the street from the Metro rail station, conveniently located close to UM. Easy access to the Palmetto Expressway. Move-in ready and easy to show. This property is also listed For Sale!

## Features & Amenities

<b>County</b>		<b>Bedrooms</b>	2	<b>MLS#</b>	A11993135
<b>Address</b>	8609 SW 68th Ct #24	<b>Bathrooms</b>	1	<b>Status</b>	A
<b>City</b>	Pinecrest FL	<b>Haft Bathrooms</b>	0	<b>Tax Amount</b>	\$
<b>Zip</b>	33156	<b>Garage Spaces</b>	0	<b>Tax Year</b>	\$0
<b>Subdivision</b>	MONTEREY GARDENS OF PINECR	<b>Water Front</b>	n/a	<b>Year Built</b>	1968
<b>Unit #</b>	24	<b>Pool</b>	n/a		
<b>Complex</b>	MONTEREY GARDENS OF PINECR	<b>Pets Allowed</b>	n/a		
		<b>Total Area SqFt</b>			
		<b>Maintenance Fee</b>	\$0		
		<b>Lot Dimensions</b>	805		

Information has not been verified, is not guaranteed