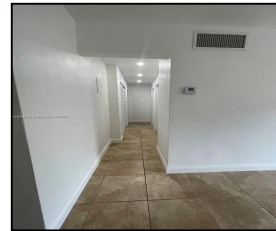
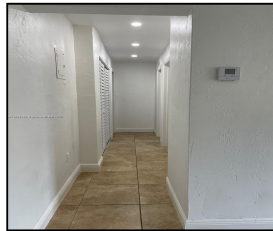


8607 SW 68th Ct #26

\$400,000



Remarks

This beautiful second-floor condo features two bedrooms and one bathroom, as well as stainless steel appliances and impact-resistant windows. Ideally situated in the Village of Pinecrest, it is a short distance from Dadeland Mall, US-1, and the Metrorail station. The gated community includes a pool, guest parking, and laundry facilities. The unit comes with one assigned parking space.

Features & Amenities

County		Bedrooms	2	MLS#	A11851384
Address	8607 SW 68th Ct	Bathrooms	1	Status	A
	#26	Haft Bathrooms	0	Tax Amount	\$4144
City	Pinecrest FL	Garage Spaces	0	Tax Year	\$2,024
Zip	33156	Water Front	n/a	Year Built	1968
Subdivision	MONTEREY	Pool	n/a		
	GARDENS OF	Pets Allowed	n/a		
	PINEC	Total Area SqFt			
Unit #	26	Maintenance Fee	\$504		
Complex	MONTEREY	Lot Dimensions	805		
	GARDENS OF				
	PINEC				

Information has not been verified, is not guaranteed