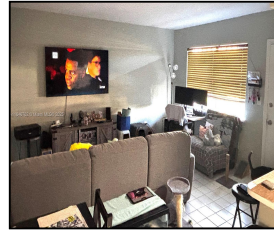


7505 SW 82nd St #318

\$1,750



## Remarks

Perfectly nestled within the Dadeland area with easy access to all major highways and the Metrorail Dadeland Station. Condo has recently gone through some renovations and upgrades, including new roof, tenting, elevator renovation, parking lot improvements, and pool upgrades. Features tile floors, balcony overlooking the pool area, and assigned parking.

## Features & Amenities

<b>County</b>		<b>Bedrooms</b>	1	<b>MLS#</b>	A11848762
<b>Address</b>	7505 SW 82nd St	<b>Bathrooms</b>	1	<b>Status</b>	PS
	#318	<b>Haft Bathrooms</b>	0	<b>Tax Amount</b>	\$
<b>City</b>	Miami FL	<b>Garage Spaces</b>	0	<b>Tax Year</b>	\$0
<b>Zip</b>	33143	<b>Water Front</b>	n/a	<b>Year Built</b>	1967
<b>Subdivision</b>	DADELAND PARK	<b>Pool</b>	n/a		
	CONDO	<b>Pets Allowed</b>	n/a		
<b>Unit #</b>	318	<b>Total Area SqFt</b>			
<b>Complex</b>	DADELAND PARK	<b>Maintenance Fee</b>	\$0		
	CONDO	<b>Lot Dimensions</b>	560		

Information has not been verified, is not guaranteed